



2013-14 SWIS Summary National Data Sample

Data drawn from the August 1, 2013 through July 31, 2014 database generated by schools using SWIS, and agreeing to share data for research and evaluation purposes.

This research activity was supported by the Office of Special Education Programs US Department of Education Technical Assistance Center on Positive Behavioral Interventions and Supports (H326S980003).

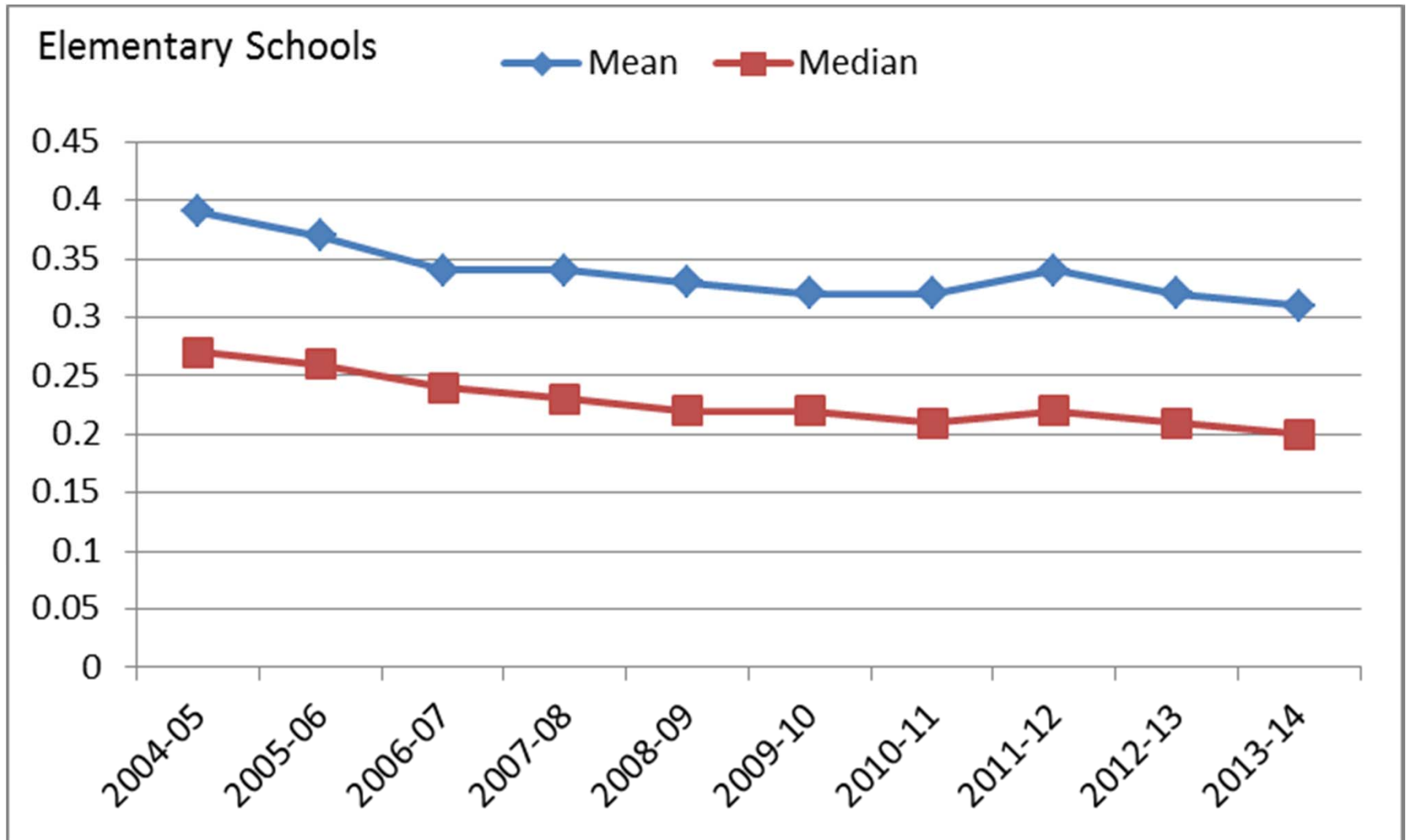


SWIS summary 2013-14(Majors Only)

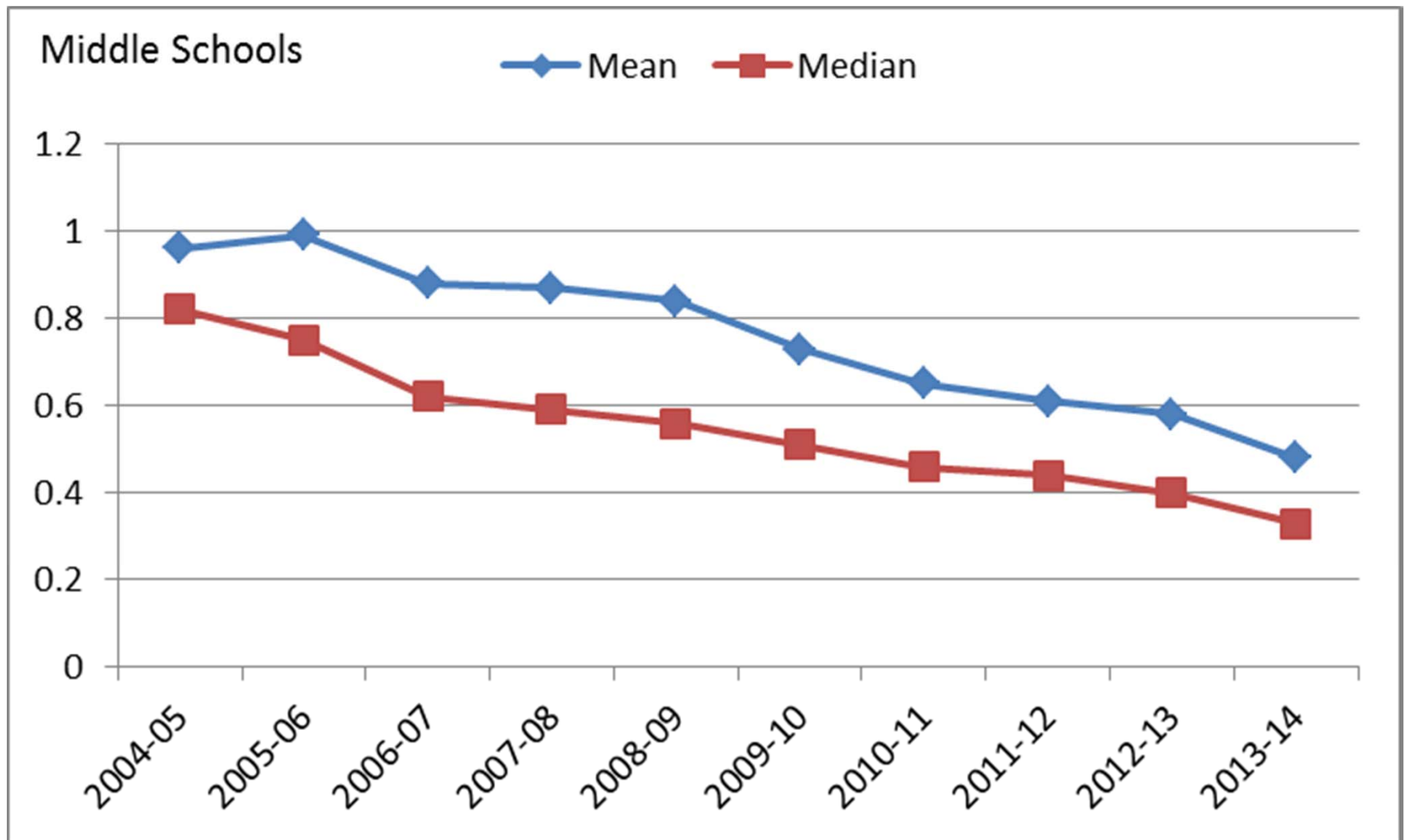
4868 schools; 2,486,047 students; 1,524,848 ODRs

Grade Range	Number of Schools	Mean Enrollment per school	Mean ODRs per 100 students/ school day	Median ODRs per 100 per students/ school day	25 th Percentile ODR/100/ school day	75 th Percentile ODR/100/ school day
K-6	3039	450	.31 (.40)	.20	.10	.38
6-9	895	613	.48 (.67)	.33	.17	.58
9-12	458	823	.57 (1.03)	.36	.17	.69
PreK-8	272	419	.40 (.42)	.27	.13	.51
PreK-12	75	336	.76 (1.47)	.37	.17	.62

Major ODR Trends (Elementary)



ODR Trends (Majors) Middle Schools



ODR Trends (Majors) High Schools

