

SWIS Summary

2015–16 Academic Year

5424 Schools | 2,827,892 Students | 1,715,388 ODRs

Data Reported August 2016

MAJORS ONLY

Grade Range	Number of Schools	Mean Enrollment per School	Mean ODRs/100 Students/School Day	Median ODRs/100 Students/School Day	25th Percentile ODRs/100 Students/School Day	75th Percentile ODRs/100 Students/School Day
K-6	3405	456	.32 (.46)	.20	.09	.39
6-9	979	624	.48 (.59)	.31	.16	.60
9-12	488	879	.52 (.78)	.33	.17	.62
PreK-8	347	425	.45 (.69)	.28	.12	.51
PreK-12	86	307	.60 (1.25)	.29	.15	.50

ODR=office discipline referral; (#)=standard deviation; Shaded column=most useful for decision making

continued on next page

MINORS ONLY

Grade Range	Number of Schools	Mean Enrollment per School	Mean ODRs/100 Students/School Day	Median ODRs/100 Students/School Day	25th Percentile ODRs/100 Students/School Day	75th Percentile ODRs/100 Students/School Day
K-6	2788	448	.46 (.63)	.26	.10	.57
6-9	773	597	.57 (.68)	.36	.14	.73
9-12	375	834	.50 (.93)	.22	.06	.50
PreK-8	294	436	.70 (1.71)	.27	.08	.67
PreK-12	83	302	.74 (.96)	.42	.20	.88

ODR=office discipline referral; (#)=standard deviation; Shaded column=most useful for decision making

IN-SCHOOL SUSPENSIONS

Grade Range	Number of Schools	Mean Enrollment per School	Mean Count of Students with ISS/100 Students	Mean Count of ISS Events/100 Students	Mean Count of Days of ISS
K-6	3405	456	1.98 (3.49)	.01 (.10)	3.12 (9.94)
6-9	979	624	8.42 (9.08)	.06 (.25)	23.04 (40.32)
9-12	488	879	7.40 (8.38)	.09 (.36)	17.77 (26.47)
PreK-8	347	425	4.01 (5.55)	.04 (.26)	7.39 (15.49)
PreK-12	86	307	4.68 (6.07)	.08 (.41)	6.53 (12.93)

ISS=in-school suspension; (#)=standard deviation

OUT-OF-SCHOOL SUSPENSIONS

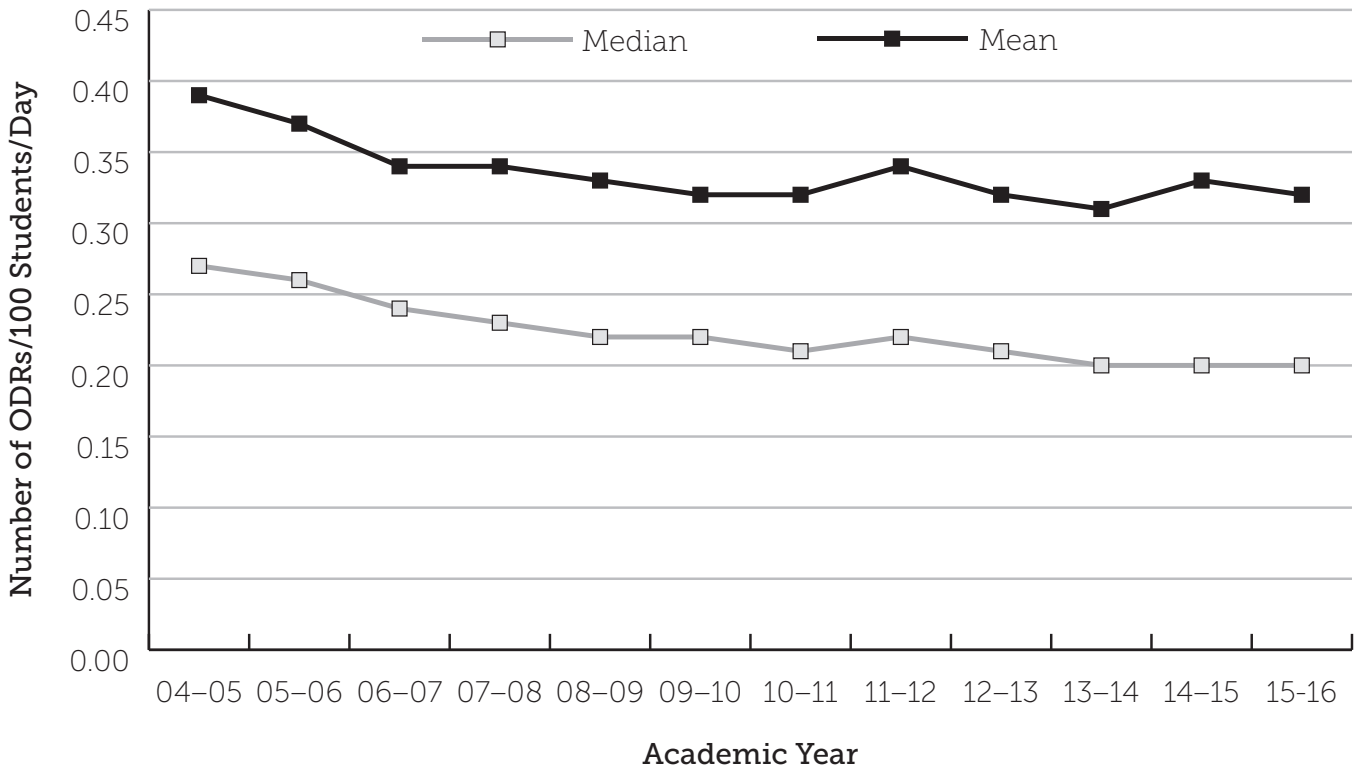
Grade Range	Number of Schools	Mean Enrollment per School	Mean Count of Students with OSS/ 100 Students	Mean Count of OSS Events/100 Students	Mean Count of Days of OSS
K-6	3405	456	2.27 (3.50)	3.15 (9.75)	6.21 (14.29)
6-9	979	624	6.77 (6.84)	4.34 (10.58)	31.38 (51.23)
9-12	488	879	6.76 (7.49)	5.83 (16.39)	33.01 (49.76)
PreK-8	347	425	5.16 (6.85)	3.34 (11.39)	19.27 (35.25)
PreK-12	86	307	4.93 (6.46)	4.92 (10.07)	16.52 (26.69)

OSS=out-of-school suspension; (#)=standard deviation

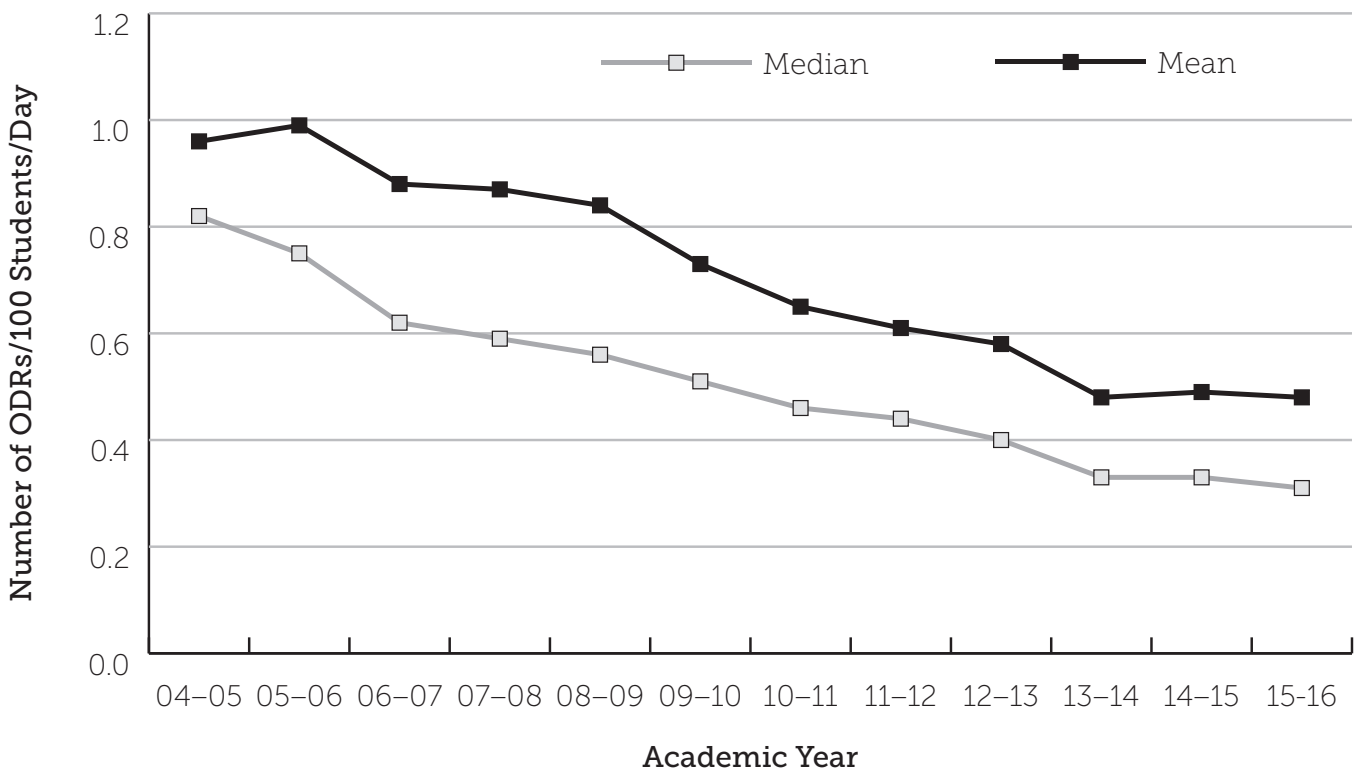
MAJOR ODRs/GRADE LEVEL (TRIANGLE)



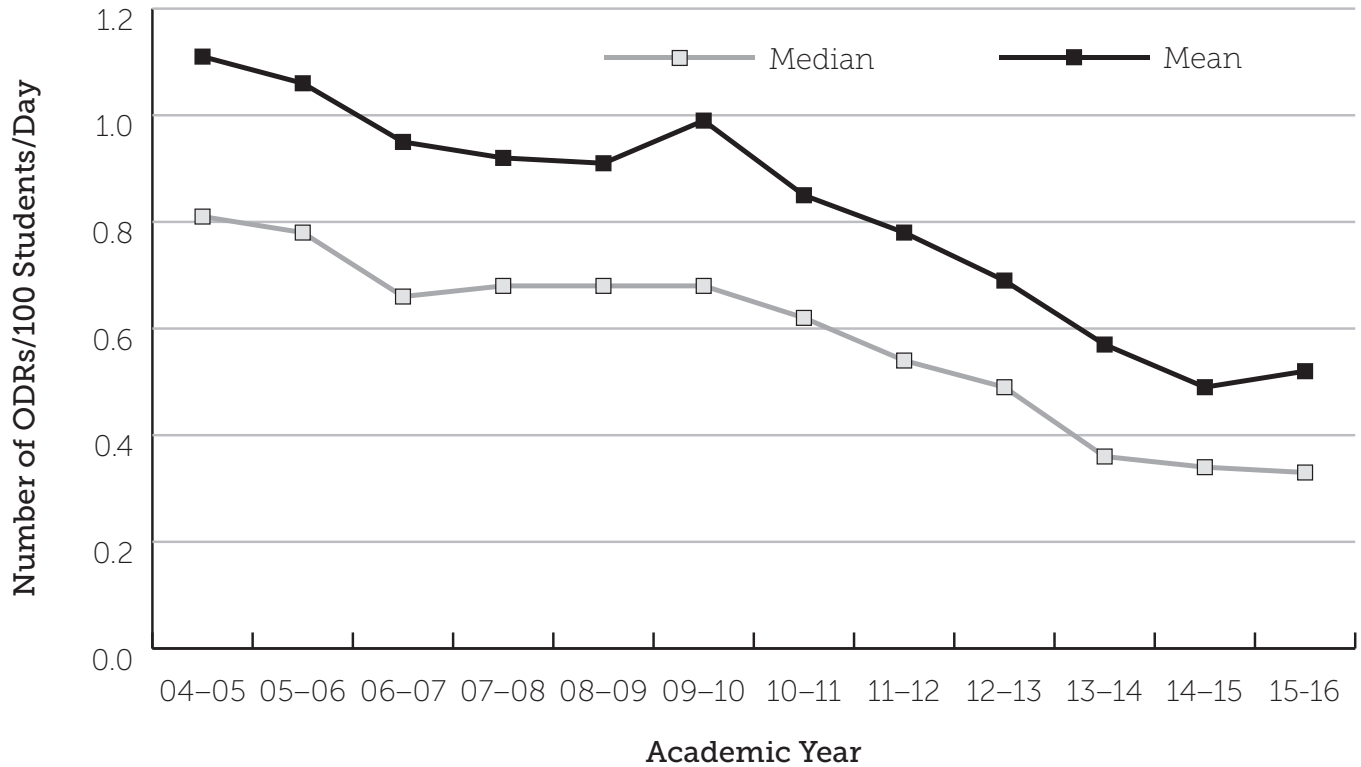
**ELEMENTARY SCHOOL HISTORICAL TREND,
NATIONAL MEDIAN AND MEAN MAJOR ODRs/100 STUDENTS/DAY**



**MIDDLE SCHOOL HISTORICAL TREND,
NATIONAL MEDIAN AND MEAN MAJOR ODRs/100 STUDENTS/DAY**



**HIGH SCHOOL HISTORICAL TREND,
NATIONAL MEDIAN AND MEAN MAJOR ODRs/100 STUDENTS/DAY**



PBISApps.org is the home of web-based applications used by schools, districts, regions, and states in the US and abroad as part of their on-going decision-making processes.

Educators have been using PBISApps for over ten years to make schools safer, more

productive learning environments — empowering them to make data-based decisions in real time.

PBISApps.org is run by Educational & Community Supports, a research unit at the University of Oregon.



www.pbisapps.org | 855-455-8194