

# SWIS Summary

2017–18 Academic Year

5553 Schools | 3,080,867 Students | 1,853,211 Major ODRs

Data Reported August 2018

## MAJORS ONLY

Grade Range	Number of Schools	Mean Enrollment per School	Mean ODRs/100 Students/School Day	Median ODRs/100 Students/School Day	25th Percentile ODRs/100 Students/School Day	75th Percentile ODRs/100 Students/School Day
K-6	3592	465	.34 (.47)	.20	.09	.42
6-9	1002	650	.46 (.57)	.31	.16	.58
9-12	517	970	.46 (.72)	.29	.15	.53
PreK-8	351	449	.45 (.79)	.26	.13	.56
PreK-12	91	332	.96 (1.82)	.31	.14	.85

*ODR=office discipline referral; (#)=standard deviation; Shaded column=most useful for decision making*

*continued on next page*

**MINORS ONLY**

Grade Range	Number of Schools	Mean Enrollment per School	Mean ODRs/100 Students/School Day	Median ODRs/100 Students/School Day	25th Percentile ODRs/100 Students/School Day	75th Percentile ODRs/100 Students/School Day
K-6	3008	461	.44 (.63)	.25	.09	.56
6-9	800	631	.57 (.76)	.32	.12	.73
9-12	379	939	.32 (.52)	.15	.04	.38
PreK-8	296	446	.70 (1.82)	.30	.10	.64
PreK-12	80	337	.77 (.91)	.42	.19	.98

*ODR=office discipline referral; (#)=standard deviation; Shaded column=most useful for decision making*

**IN-SCHOOL SUSPENSIONS**

Grade Range	Number of Schools	Mean Enrollment per School	Mean Count of Students with ISS/100 Students	Mean Count of ISS Events/100 Students	Mean Count of Days of ISS
K-6	3592	465	2.06 (3.58)	3.41 (8.39)	3.19 (9.37)
6-9	1002	650	8.73 (8.56)	17.06 (23.94)	24.93 (42.05)
9-12	517	970	7.74 (7.94)	14.98 (20.99)	20.62 (32.46)
PreK-8	351	449	3.77 (5.45)	6.27 (12.17)	6.64 (13.48)
PreK-12	91	332	4.41 (6.48)	7.50 (15.52)	7.55 (14.86)

*ISS=in-school suspension; (#)=standard deviation*

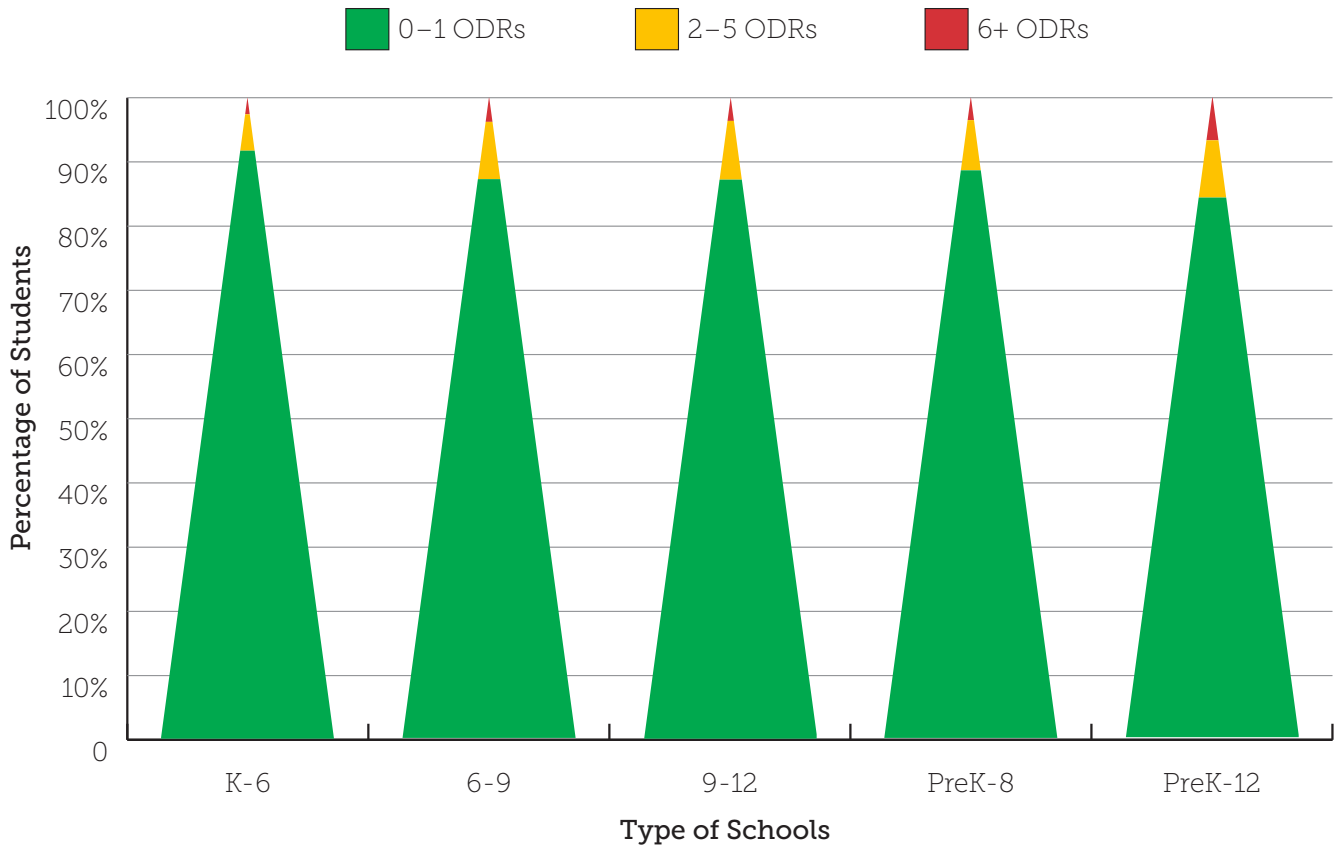
**OUT-OF-SCHOOL SUSPENSIONS**

Grade Range	Number of Schools	Mean Enrollment per School	Mean Count of Students with OSS/ 100 Students	Mean Count of OSS Events/100 Students	Mean Count of Days of OSS
K-6	3592	465	2.51 (3.99)	4.66 (9.53)	7.26 (19.11)
6-9	1002	650	7.57 (7.27)	13.43 (16.74)	35.14 (54.04)
9-12	517	970	7.08 (7.30)	11.65 (16.43)	34.71 (47.01)
PreK-8	351	449	4.69 (6.07)	8.18 (12.36)	16.24 (27.46)
PreK-12	91	332	4.19 (5.71)	6.95 (11.77)	15.66 (27.38)

*OSS=out-of-school suspension; (#)=standard deviation*

*continued on next page*

**MAJOR ODRs/GRADE LEVEL (TRIANGLE)**

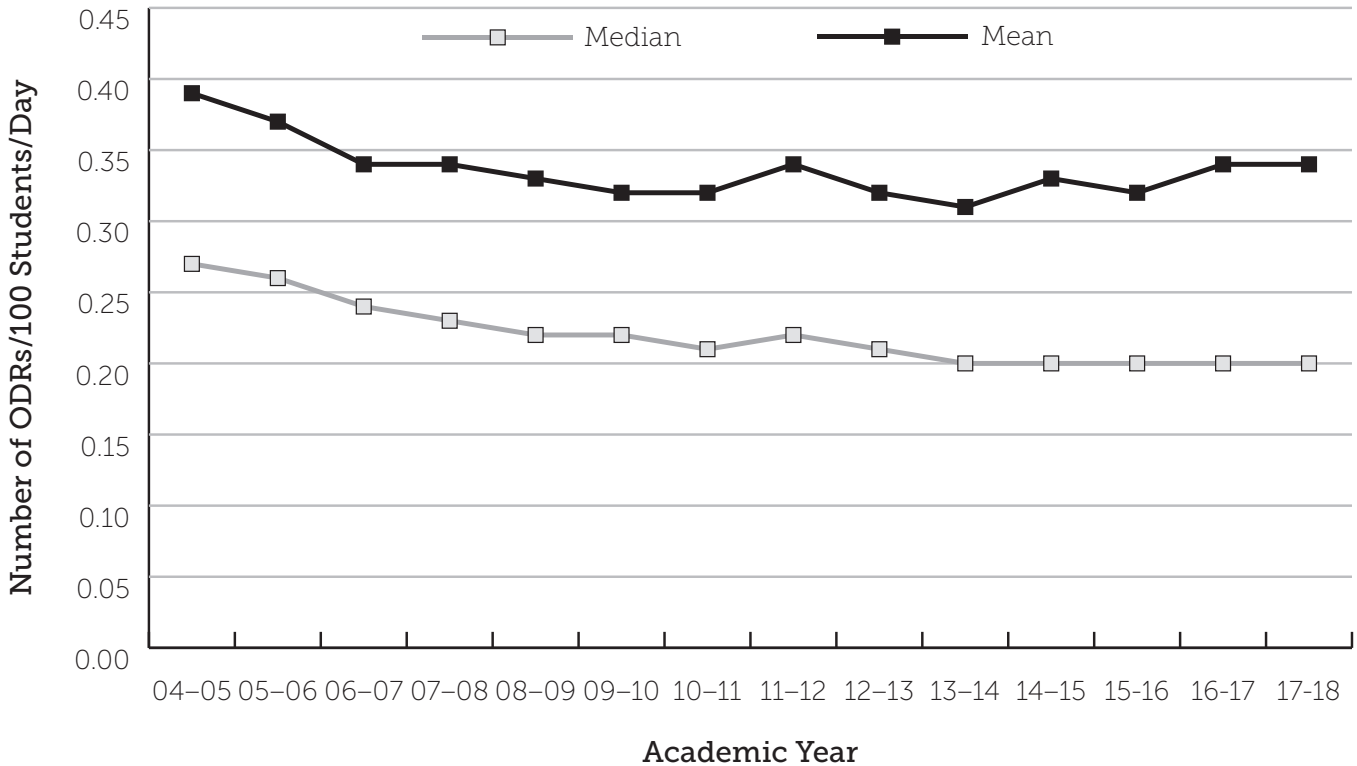


**MAJOR ODRs/GRADE LEVEL**

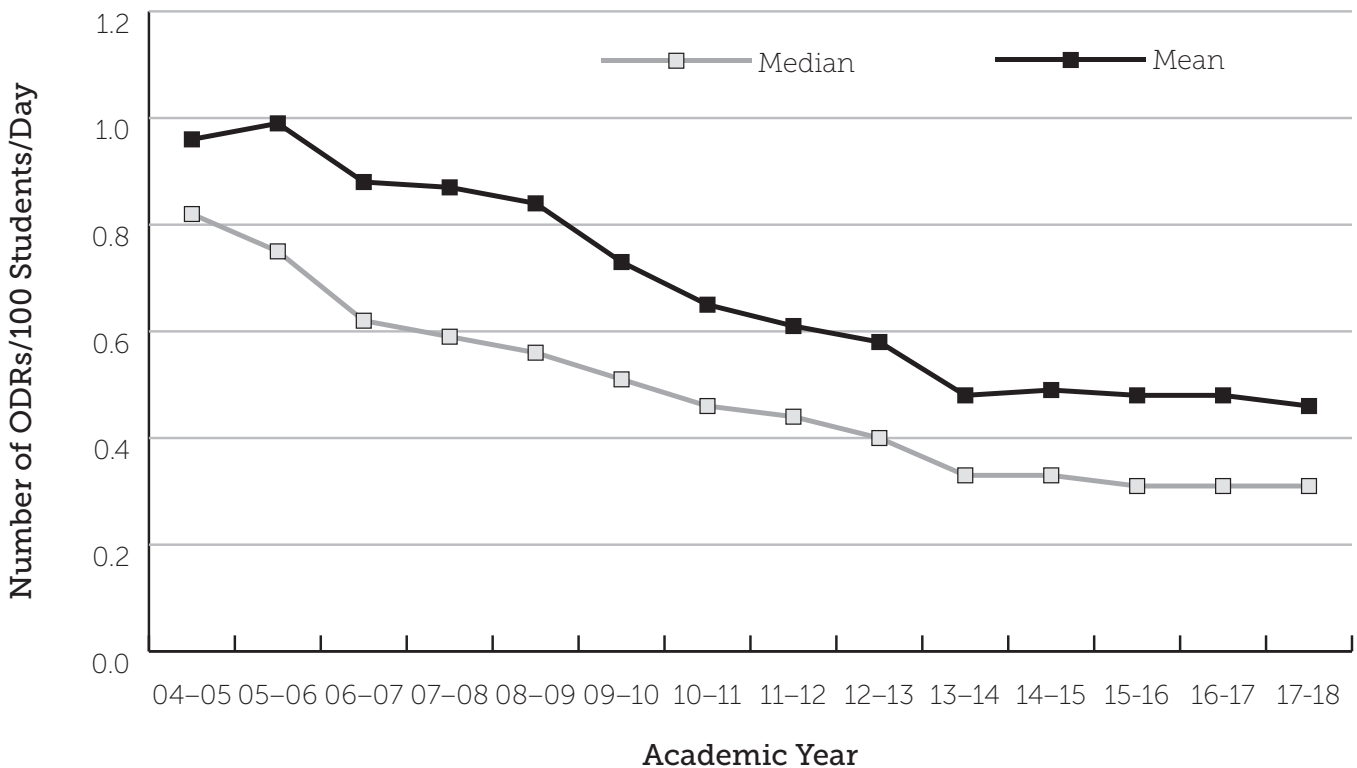
Grade Range	Number of Schools	Mean Enrollment per School	Mean Percent of Students with 0-1 ODRs	Mean Percent of Students with 2-5 ODRs	Mean Percent of Students with 6+ ODRs
K-6	3592	465	91.75%	5.67%	2.58%
6-9	1002	650	87.32%	8.92%	3.76%
9-12	517	970	87.24%	9.15%	3.61%
PreK-8	351	449	88.69%	7.82%	3.49%
PreK-12	91	332	84.45%	8.92%	6.63%

ODR=office discipline referral

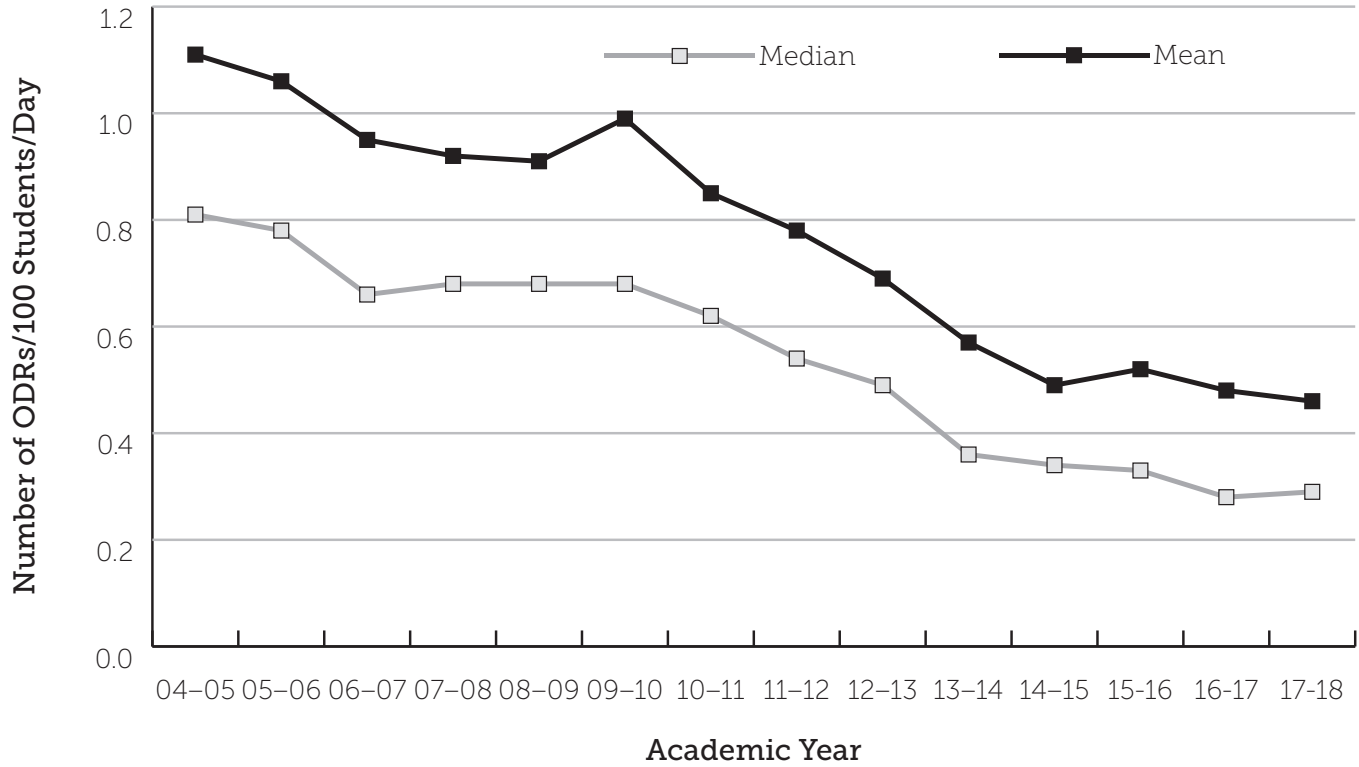
**ELEMENTARY SCHOOL HISTORICAL TREND,  
NATIONAL MEDIAN AND MEAN MAJOR ODRs/100 STUDENTS/DAY**



**MIDDLE SCHOOL HISTORICAL TREND,  
NATIONAL MEDIAN AND MEAN MAJOR ODRs/100 STUDENTS/DAY**



**HIGH SCHOOL HISTORICAL TREND,  
NATIONAL MEDIAN AND MEAN MAJOR ODRs/100 STUDENTS/DAY**



PBISApps.org is the home of web-based applications used by schools, districts, regions, and states in the US and abroad as part of their on-going decision-making processes.

Educators have been using PBISApps for over ten years to make schools safer, more

productive learning environments — empowering them to make data-based decisions in real time.

PBISApps.org is run by Educational & Community Supports, a research unit at the University of Oregon.



www.pbisapps.org | 855-455-8194